

# CHEROKEE NATION DEMAND RESPONSE TRANSIT POLICY

January 2025 – Revision 8

*PURPOSE:* To provide low-cost transportation for Native Americans and/or tribal employees<sup>1</sup> to and from eligible destinations within Cherokee Nation’s Reservation Boundary including drop-off and return services within the Extended Drop Off and Return Services Area<sup>2</sup>.

*ELIGIBILITY:* Native Americans and/or tribal employees within Cherokee Nation’s Reservation, who are unable to access existing commuter routes, and who do not qualify for Sooner Ride or TANF assistance.

*AVAILABILITY:* Individuals needing “demand-response-type” transportation should call one of Cherokee Nation’s transit service providers below to schedule round-trip transportation. Transportation is based on availability within normal operating hours and all potential riders must provide a minimum of 72 hours advance notice (3 days) for scheduling purposes: <http://transit.cherokee.org>

## *DEFINITIONS:*

1. Cherokee Nation Reservation: means all lands within the 1893 Reservation established by Treaties, Congressional Acts, and Proclamations. This area includes all or parts of the following 14 counties in northeastern Oklahoma: Adair, Cherokee, Craig, Delaware, Mayes, McIntosh, Muskogee, Nowata, Ottawa, Rogers, Sequoyah, Tulsa, Wagoner, and Washington.
2. Cherokee Nation Extended Drop Off and Return Services Area: means the balance of Mayes, Muskogee, Rogers, Tulsa, and Wagoner Counties (see attached map).
3. Cherokee Nation Transit Service Provider: means the following agencies contracted to provide demand response transit services for the Cherokee Nation:
  - a. Ki Bois Area Transit System (KATS) 1-800-289-7228
  - b. Pelivan Transit – 1-800-282-2014 / Phone app: <https://city.ridewithvia.com/pelivan>
  - c. Muskogee County Transit – 1-918-682-1721
  - d. Cimarron Public Transit – 1-918-336-2233 / Phone app: <https://ucapinc.org/cpts>

---

<sup>1</sup> Non-Native American Tribal Employees are eligible for rides to work only.

<sup>2</sup> Rides shall not originate within the area between Cherokee Nation’s Reservation and the Extended Drop Off and Return Services Area Boundary.

## CHEROKEE NATION DEMAND RESPONSE TRANSIT POLICY

January 2025 – Revision 8

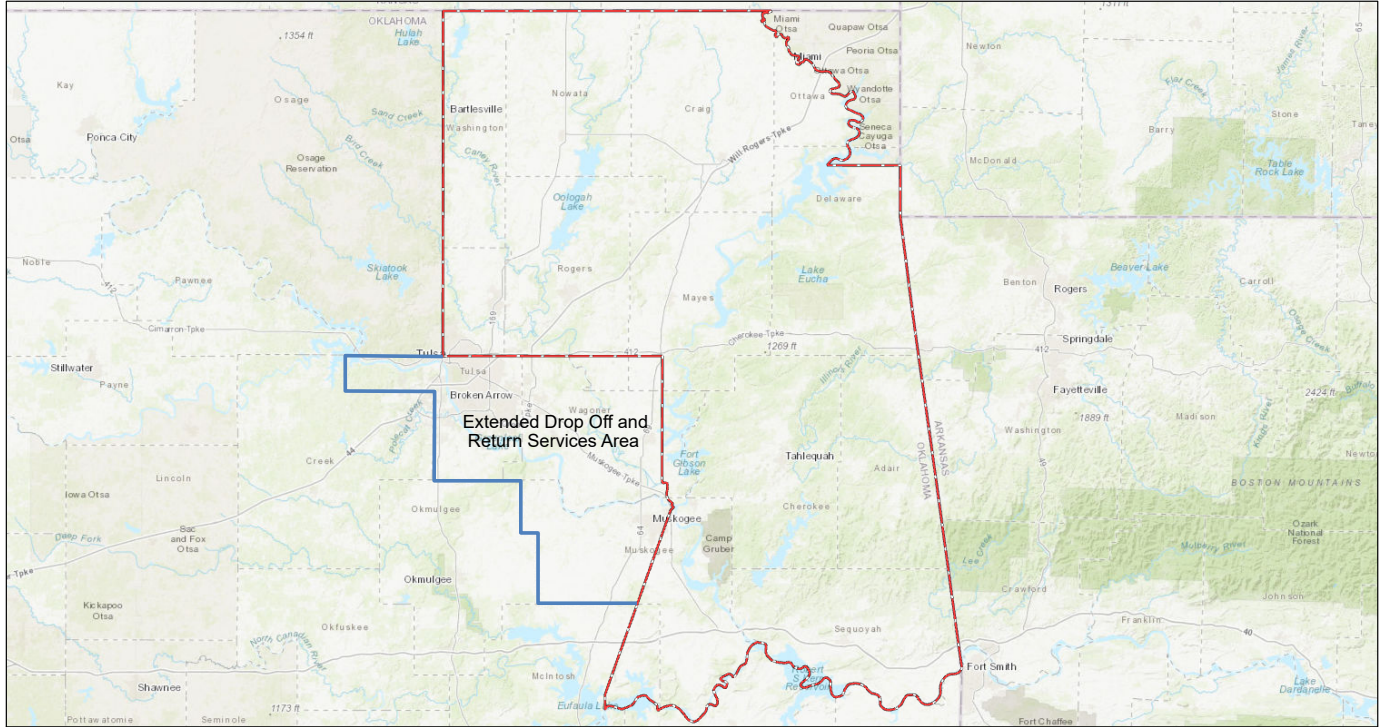
Due to funding limitations, Native American transportation requests that originate *within* the City Limits of Tulsa are subject to the full fare of the transit service provider (Metrolink Tulsa). However, Native Americans needing transportation to the City of Tulsa are eligible for the low-cost transportation rate as long as the trip begins and ends outside of the City of Tulsa and within Cherokee Nation's Reservation Boundary.

4. Low-Cost Transportation Rate: means \$1.00 round-trip until further notice (50¢ each way).
5. Demand Response: means a single and previously unscheduled transport generated by calls or by a phone app (available in certain areas) from individuals needing a ride to and from eligible destinations.
6. Eligible Destinations within Cherokee Nation's Reservation and Extended Drop Off and Return Services Area: means employment, healthcare and governmental facilities, or the nearest financial institutions, and grocery stores from the riders' point of pickup. Areas outside of Cherokee Nation's Reservation Boundary or Extended Drop Off and Return Services Area are subject to additional charges. Individuals needing transportation for recreational purposes will be subject to the full fare of the transit service provider.
7. Commuter Route: means a Cherokee Nation transit route that travels from city to city on a scheduled basis.
8. Native American: means any Indian or citizen of a Federally Recognized Indian Tribe (requires proof of tribal citizenship).
9. Tribal Employee: means any individual working for the Cherokee Nation or any of its affiliations or a federal institution that provides services directly to Indians such as the Bureau of Indian Affairs or the Indian Health Service (requires proof of employment identification badge).
10. Sooner Ride Program: means transportation costs subsidized by Medicare and Medicaid.
11. TANF: means Technical Assistance for Needy Families; a program administered by the Department of Health and Human Services that subsidizes transportation costs.

# CHEROKEE NATION DEMAND RESPONSE TRANSIT POLICY

January 2025 – Revision 8

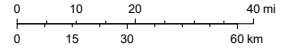
## Cherokee Nation



1/30/2025, 11:38:11 AM

 Cherokee Nation Reservation

1:1,155,581



Sources: Esri, HERE, Garmin, Intermap, increment P Corp., GEBCO, USGS, FAO, NPS, NRCAN, GeoBase, IGN, Kadaster NL, Ordnance Survey, Esri Japan, METI, Esri China (Hong Kong), (c) OpenStreetMap contributors, and the GIS User Community

Cherokee Nation